



# ***FALL 2024*** **PRESEASON** **PROGRAM**

---

***DON'T WAIT!*** This season's biggest savings won't last long!

No minimum required for one time orders.

***WE MATCH COMPETITIVE PRICING!*** SEE INSIDE FOR DETAILS

OMAHA - SIOUX FALLS - DES MOINES - MINNEAPOLIS - ST LOUIS - WATERLOO

SHOP 24/7 AT [AIRMANAGEMENTSUPPLY.COM](http://airmanagementsupply.com)

# TOP 3 REASONS TO PARTICIPATE IN OUR PRESEASON PROGRAM

## 1. LOCK IN DISCOUNT PRICING

Buy now and receive discount pricing on the items listed in this catalog.

Customers that participate in the preseason program will receive preseason pricing through 3/31/25 on all items included in the program.

## 2. EXTENDED TERMS

Receive extra cash discounts or additional time to pay on each order.

## 3. INCREASE YOUR PRODUCTIVITY

Stock up on all the parts and supplies you'll need during the cooling season. When you need a part, you'll have it in stock.

## PRESEASON TERMS

- Orders must be received by 10/31/2024 to qualify for price and terms
- Minimum order \$1500 to qualify for prices and terms
- Pricing subject to manufacturer's market fluctuations
- Standard freight terms apply
- Call for quotes on items such as wire, refrigerant, line sets, and solder
- Rheem OEM parts may be added to the preseason order

## PAYMENT TERMS

- 2% discount if paid before November 29th, 2024
- 1% discount if paid before December 31st, 2024
- Net due January 10th, 2025
- No discounts on credit card payments

## PRICE MATCH POLICY

**Air Management will match pricing of local competitive flyers on in stock items. Items must be the identical brand and part number. This excludes commodity items such as wire, refrigerant, line sets, copper fittings, and PVC.**

# CONTENTS



## THERMOSTATS

ECONET ..... 4  
 WHITE RODGERS ..... 4  
 PRO1 ..... 4  
 HONEYWELL ..... 5  
 HONEYWELL REDLINK / LYRIC ACCESSORIES ..... 6

## NDOOR AIR QUALITY

AIR CLEANERS AND REME PURIFICATION ..... 7  
 REPLACEMENT FILTERS AND HUMIDIFIER MEDIA ..... 8

## INSTALLATION ACCESSORIES

CONDENSATE PUMPS AND ACCESSORIES ..... 9  
 CONDENSER PADS AND BRACKETS ..... 9  
 WHIPS AND DISCONNECTS ..... 9  
 GAS CONNECTORS AND GAS COCKS ..... 9  
 ZOOMLOCK PUSH FITTINGS ..... 10  
 SMARTLOCK FITTINGS ..... 10  
 ZOOMLOCK MAX CRIMP FITTINGS ..... 11

## MOTORS AND BRACKETS

ECM RESCUE MOTORS ..... 12  
 PSC RESCUE MOTORS ..... 13  
 US MOTORS GENERAL REPLACEMENT MOTORS ..... 14  
 RHEEM OEM MOTORS ..... 15  
 MOTOR MOUNTING BRACKETS ..... 15

## SERVICE PARTS

CAPACITORS ..... 16-17  
 START ASSISTS ..... 18  
 CONTACTORS ..... 18  
 TRANSFORMERS ..... 18  
 RELAYS AND TIME DELAYS ..... 18  
 SEQUENCERS ..... 19  
 FAN AND LIMIT CONTROLS ..... 19  
 THERMOCOUPLES ..... 19  
 GAS VALVES ..... 20  
 IGNITION CONTROLS ..... 20  
 HOT SURFACE IGNITORS ..... 20

## SERVICE SUPPLIES

DRIERS ..... 21  
 SOLDERING SUPPLIES ..... 21  
 WIRE NUTS AND WIRE TIES ..... 21  
 FUSES ..... 22  
 TAPES ..... 22  
 CAULK AND SEALENTS ..... 22  
 WASP SPRAY, LEAK DETECTOR BUBBLES ..... 23

| RHEEM ECONET SYSTEM CONTROL |             |                             |          |
|-----------------------------|-------------|-----------------------------|----------|
| 031422                      | RETST800SYS | RHEEM ECONET SYSTEM CONTROL | \$229.95 |



## White-Rodgers

| WHITE RODGERS 70 SERIES THERMOSTATS |             |  |          |
|-------------------------------------|-------------|--|----------|
| 030710                              | 1F78-144    | 70 SERIES 1 HT / 1 COOL NON-PROGRAM  | \$28.95  |
| 030720                              | 1F78-151    | 70 SERIES 1 HT / 1 COOL 5/2 DAY PROGRAM  | \$33.95  |
| WHITE RODGERS 80 SERIES THERMOSTATS |             |  |          |
| 030905                              | 1F83C-11NP  | 80 SERIES 1 HT / 1 COOL NON-PROGRAM  | \$39.95  |
| 030910                              | 1F83C-11PR  | 80 SERIES 1 HT / 1 COOL 7, 5+1+1 OR NON-PROGRAM  | \$45.95  |
| 030912                              | 1F83H-21NP  | 80 SERIES 2 HT / 1 COOL 7 DAY, 5+1+1, 5+2, OR NON-PROGRAM                                  | \$46.95  |
| 030915                              | 1F85U-22NP  | 80 SERIES 2 HT / 2 COOL NON-PROGRAM  | \$59.95  |
| 030920                              | 1F85U-22PR  | 80 SERIES 2 HT / 2 COOL 7, 5+1+1 OR NON-PROGRAM  | \$65.95  |
| 030925                              | 1F85U-42NP  | 80 SERIES 4 HT / 2 COOL NON-PROGRAM  | \$67.95  |
| 030930                              | 1F85U-42PR  | 80 SERIES 4 HT / 2 COOL 7, 5+1+1 OR NON-PROGRAM  | \$77.95  |
| 030872                              | 1F87U-42WF  | <b>WI-FI</b> SENSI 80 SERIES 4 HT / 2 COOL 7 DAY PROGRAM                                   | \$129.95 |
| 030898                              | F61-2663    | WALL PLATE FOR NEW 80 SERIES   | \$5.29   |
| WHITE RODGERS 90 SERIES THERMOSTATS |             |  |          |
| 030950                              | 1F95EZ-0671 | 90 SERIES E-Z READER 4 HT / 2 COOL 7 DAY OR NON-PROGRAM                                    | \$113.95 |
| 030952                              | 1F95-1277   | 90 SERIES TOUCHSCREEN 4 HT / 2 COOL 7 DAY OR N.P.  | \$184.95 |
| 030893                              | 1F95U-42WF  | <b>WI-FI</b> SENSI TOUCH 90 SERIES 4 HT / 2 COOL 7 DAY PROG.<br><b>WHILE SUPPLIES LAST</b> | \$169.95 |
| 030610                              | F145-1328   | INDOOR SENSOR FOR ALL W/R WITH WIRED SENSOR OPTION   | \$30.95  |
| 030605                              | F145-1378   | OUTDOOR SENSOR FOR ALL W/R WITH WIRED SENSOR OPTION  | \$36.95  |



## PRO

| PRO 1 THERMOSTATS |       |   |         |
|-------------------|-------|---|---------|
| 031036            | T501M | MECHANICAL 1 HEAT / 1 COOL - NON-PROGRAM                          | \$26.77 |
| 031021            | T701  | 700 SERIES 1 HEAT / 1 COOL - NON-PROGRAM                          | \$36.95 |
| 031022            | T7011 | <b>WI-FI</b> 700 SERIES - 1 HEAT / 1 COOL WIFI - PROGRAM WITH APP | \$79.95 |
| 031025            | T705  | 700 SERIES 1 HEAT / 1 COOL 7, 5+1+1 OR NON-PROGRAM                | \$42.95 |
| 031032            | T715  | 700 SERIES 2 HEAT / 2 STG COOL 7, 5+1+1 OR NON-PROGRAM            | \$57.95 |
| 031026            | T721  | 700 SERIES 2 HEAT / 1 COOL HT PUMP NON-PROGRAM                    | \$48.95 |
| 031027            | T725  | 700 SERIES 2 HEAT / 1 COOL HT PUMP 7, 5+1+1 OR NON-PROGRAM        | \$55.95 |
| 031024            | T755  | 700 SERIES 3 HEAT / 2 COOL 7, 5+1+1 OR NON PROGRAM                | \$73.95 |
| 031024S           | T755S | 700 SERIES 3 HEAT / 2 COOL T-755 FOR USE WITH WIRED SENSOR        | \$92.95 |
| 031023            | T771  | 700 SERIES 1 HEAT OR 1 COOL ONLY NON-PROGRAM                      | \$35.95 |
| 031028            | T805  | 800 SERIES 1 HEAT / 1 COOL 7, 5+1+1 OR NON-PROGRAM                | \$76.95 |
| 031018S           | R250S | WIRED OUTDOOR / SLAB SENSOR FOR T755S                             | \$27.95 |
| 031029            | T119  | PRO 1 UNIVERSAL BACKPLATE   | \$6.29  |



# Honeywell



| T SERIES THERMOSTATS |                  |  |          |
|----------------------|------------------|--|----------|
| 029180               | TH1100DV1000/U   | HEAT ONLY NON-PROGRAM 35-90 DEGREE RANGE   | \$36.95  |
| 029175               | TH1110D2009/U    | T1 PRO SERIES 1 HEAT / 1 COOL NON-PROGRAM  | \$42.95  |
| 029190               | TH1110E1000/U    | T1 PRO SERIES 1 HEAT / 1 COOL NON-PROGRAM LARGE DISPLAY  | \$31.95  |
| 029305               | TH3110U2008/U    | T3 PRO SERIES 1 HEAT / 1 COOL NON-PROGRAM  | \$39.95  |
| 029415               | TH4110U2005/U    | T4 PRO SERIES 1 HEAT / 1 COOL 7, 5+1+1 OR NON-PROGRAM  | \$57.95  |
| 029675               | TH6210U2001/U    | T6 PRO SERIES 2 H/1C HT PUMP – 1H/1C CONVENTIONAL 7, 5+1+1 OR NON-PROGRAM  | \$81.95  |
| 029670               | TH6220U2000/U    | T6 PRO SERIES 2H/1C HT PUMP – 2H/2C CONVENTIONAL - DUAL FUEL W/ WIRED SENSOR - 7, 5+1+1 OR N.P.                                    | \$110.95 |
| 029665               | TH6320U2008/U    | T6 PRO SERIES 3H/2C HT PUMP – 2H/2C CONVENTIONAL - DUAL FUEL W/ WIRED SENSOR - 7, 5+1+1 OR N.P.                                    | \$124.95 |
| 029685               | TH6220WF2006/U   | <b>WI-FI</b> LYRIC T6 PRO WIFI 2H/1C HT PUMP – 2H/2C CONVENTIONAL - 7, 5+1+1 OR NON-PROGRAM  | \$152.95 |
| 029680               | TH6320WF2003/U   | <b>WI-FI</b> LYRIC T6 PRO WIFI 3H/2C HT PUMP 2H/2C CONVENTIONAL W/ VENTILATION DUAL FUEL WIRED SENSOR RECOMMENDED 7, 5+1+1 OR N.P. | \$204.95 |
| 029935               | THX321WFS3001W/U | T10 Pro Smart Thermostat with <b>REDLINK</b> Room Sensor   | \$274.95 |
| 029096               | THP2400A1080/U   | WALL COVER PLATE FOR T SERIES  | \$16.95  |



| VISION PRO THERMOSTATS |                |  |          |
|------------------------|----------------|--|----------|
| 029812                 | TH8110R1008/U  | <b>REDLINK</b> VISION PRO 8000 TOUCHSCREEN 1H/1C - 7 DAY OR NON-PROGRAM                                | \$220.95 |
| 029834                 | TH8321R1001/U  | <b>REDLINK</b> VISION PRO 8000 TOUCHSCREEN 3H/2C 7 DAY PROGRAM - A/C OR HP - MAN OR AUTO               | \$269.95 |
| 029838                 | TH8321WF1001/U | <b>WI-FI</b> VISION PRO 8000 TOUCHSCREEN 2H/1C HT PUMP – 2H/2C CONVENTIONAL- 7 DAY OR NON-PROGRAMMABLE | \$249.95 |
| 029094                 | THP2400A1019/U | WALL COVER PLATE FOR VISION PRO 8000 SERIES  | \$18.95  |



| PRESTIGE THERMOSTATS |                   |   |          |
|----------------------|-------------------|---|----------|
| 029920               | TH9320WF5003/U    | <b>WI-FI</b> PRESTIGE 9000 COLOR TOUCHSCREEN 2H/1C HT PUMP – 2H/2C CONVENTIONAL- 7 DAY OR NON-PROGRAM         | \$251.95 |
| 029985K              | YTHX9421R5101WW/U | <b>REDLINK</b> PRESTIGE IAQ KIT WITH SUPPLY AND RETURN SENSORS INCLUDES INTERFACE MODULE & WIRELESS OD SENSOR | \$474.95 |
| 029093               | THP2400A1027W/U   | WALL COVER PLATE FOR PRESTIGE IAQ SERIES  | \$16.95  |

| HONEYWELL ACCESSORIES |                 |  |          |
|-----------------------|-----------------|--|----------|
| 029555                | YTHM5421R1010/U | <b>REDLINK</b> EQUIPMENT INTERFACE MODULE WITH SUPPLY AND RETURN SENSORS                             | \$108.95 |
| 032760                | ERM5220R1018/U  | <b>REDLINK</b> OUTDOOR REMOTE EQUIPMENT MODULE   | \$159.24 |
| 029400                | THM4000R1000/U  | <b>REDLINK</b> WIRELESS ADAPTER KIT TO USE REDLINK STATS WITH ZONE PANELS                            | \$80.95  |
| 029022                | C7089R1013/U    | <b>REDLINK</b> WIRELESS OUTDOOR TEMPERATURE/HUMIDITY SENSOR FOR USE WITH REDLINK ENABLED THERMOSTATS | \$80.95  |
| 029024                | C7189R1004/U    | <b>REDLINK</b> WIRELESS INDOOR TEMPERATURE/HUMIDITY SENSOR FOR USE WITH REDLINK ENABLED THERMOSTATS  | \$60.95  |
| 029030                | C7089U1006/U    | WIRED OUTDOOR SENSOR   | \$93.95  |
| 029600                | THM6000R7001/U  | REDLINK INTERNET GATEWAY   | \$36.95  |
| 031498                | THP9045A1023/U  | HONEYWELL WIRE SAVER   | \$19.95  |
| 032701K               | HZ311K/U        | ZONE PANEL KIT 1 HEAT / 1 COOL UP TO 3 ZONES INCLUDES TRANSFORMER AND DISCHARGE SENSOR               | \$210.95 |
| 032703K               | HZ322K/U        | ZONE PANEL KIT 2 HEAT / 1 COOL UP TO 3 ZONES INCLUDES TRANSFORMER AND DISCHARGE SENSOR               | \$274.95 |
| 032704K               | HZ432K/U        | ZONE PANEL KIT 3 HEAT / 2 COOL UP TO 4 ZONES INCLUDES TRANSFORMER AND DISCHARGE SENSOR               | \$489.95 |
| 031996                | TG511A1000/U    | CLEAR THERMOSTAT LOCK BOX  | \$32.95  |



| ***NEW*** LYRIC CONNECTED TEMP AND FLOOD CONTROL ALARM |                |  |          |
|--|----------------|--|----------|
| 029306   | TWLD3005-001/U | LYRIC <b>WI-FI</b> WATER / TEMP ALARM WITH CONTACTS                  | \$78.95  |
| 029307   | VWS02Y-1       | <b>*NEW*</b> <b>WI-FI</b> BALL VALVE 1" FPT WORKS WITH WATER ALARM   | \$232.95 |
| 029308   | VWS02Y-3/4     | <b>*NEW*</b> <b>WI-FI</b> BALL VALVE 3/4" FPT WORKS WITH WATER ALARM | \$200.95 |



# Honeywell



| HONEYWELL INDOOR AIR QUALITY SOLUTIONS |              |                                   |           |
|--|--------------|-----------------------------------|-----------|
| 200011                                 | F100F1625/U  | 16 X 25 MEDIA AIR CLEANER         | \$148.95  |
| 200120                                 | F100F2025/U  | 20 X 25 MEDIA AIR CLEANER         | \$148.95  |
| 296110                                 | HM750A1000/U | ELECTRODE HUMIDIFIER 115/220 VOLT | \$1056.95 |
| 296105                                 | HE150A1005/U | ADVANCED SMALL BYPASS MODEL       | \$321.95  |
| 296107                                 | HE250A1005/U | ADVANCED LARGE BYPASS MODEL       | \$343.95  |
| 296108                                 | HE300A1005/U | ADVANCED FAN POWERED MODEL        | \$431.95  |
| 2961001                                | HE105A1000/U | BASIC SMALL BYPASS MODEL          | \$141.95  |
| 296106                                 | HE205A1000/U | BASIC LARGE BYPASS MODEL          | \$156.95  |

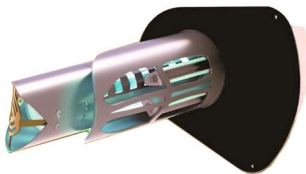
# PROTECH™



| RHEEM PROTECH MEDIA AIR CLEANERS |              |  |          |
|----------------------------------|--------------|--|----------|
| 200100                           | 84-TL20255   | AIR BEAR MEDIA AIR CLEANER - 2000 CFM            | \$144.95 |
| 200030                           | 84-TL16255   | AIR BEAR CUB SUPREME MEDIA AIR CLEANER- 1200 CFM | \$144.95 |
| 200150                           | 84-TL20255-R | RIGHT ANGLE AIR BEAR AIR CLEANER 2000 CFM        | \$199.95 |

# REME·HALO®

By RGF™



| REME HALO AIR PURIFIER |             |   |          |
|------------------------|-------------|---|----------|
| 200579                 | REME-H      | REME HALO AIR PURIFIER                  | \$399.95 |
| 200594                 | REME-LED    | REME LED AIR PURIFIER                   | \$497.95 |
| 200590                 | CLEARSKY-DM | REME CLEAR SKY DM                       | \$89.95  |
| 200581                 | PHIC-RH     | REPLACEMENT BULB ASSEMBLY FOR REME HALO | \$154.95 |

**REPLACEMENT MEDIA FOR AIR CLEANERS**

|        |              |  |         |
|--------|--------------|--|---------|
| 205005 | 54-25051-01  | REPLACES TRION AIR BEAR 19-3/4 X 24-1/4 X 4-7/8    | \$21.95 |
| 205002 | 54-25051-02  | REPLACES TRION AIR BEAR CUB 15-3/4 X 24-1/4 X 3    | \$17.95 |
| 205003 | 54-25051-04  | REPLACES TRION CUB SUPREME 16 X 25 X 5             | \$26.95 |
| 200320 | FC100A1029/U | REPLACES HONEYWELL 15-7/8 X 24-3/4 X 4-3/8 MERV 11 | \$22.95 |
| 200330 | FC100A1037/U | REPLACES HONEYWELL 19-7/8 X 24-3/4 X 4-3/8 MERV 11 | \$22.95 |



**PADS AND PARTS FOR HUMIDIFIERS**

|         |             |   |         |
|---------|-------------|---|---------|
| 296003  | 7002        | 990-13 WATER PANEL FOR 1040,1042                    | \$14.29 |
| 2969920 | 1099-20     | 1099-20 WATER PANEL FOR 1099                        | \$17.99 |
| 2967919 | 7919        | GA19 REPLACEMENT PAD FOR 900, 1000                  | \$10.95 |
| 296001  | 7900        | GA570 HUMIDIFIER PAD FOR 110, 220, 550, 570, 84-A10 | \$8.99  |
| 296002  | 7901        | GA12 HUMIDIFIER PAD FOR 112, 224, 84-A12            | \$15.95 |
| 296035  | 7902        | GA35 HUMIDIFIER PAD FOR 560,760 84-A35              | \$11.29 |
| 296009  | 84-25055-02 | G206 EVAPORATOR PAD FOR G200 RHEEM #84-25055-02     | \$19.95 |
| 296053  | 990-53      | 990-53 24V SOLENOID VALVE FOR 1042LH                | \$53.95 |
| 2964040 | GA4040      | GA4040 24V SOLENOID VALVE REPLACES APRILAIRE        | \$46.95 |



**CONDENSATE PUMPS AND ACCESSORIES**

|         |                |   |          |
|---------|----------------|---|----------|
| 104504  | PROCP-22ST     | ASSURITY 20' LIFT PUMP W/ 20' TUBING, CHECK VALVE, SAFETY SWITCH, AND 6' CORD - <b>115 VOLT</b> | \$57.95  |
| 104507  | PROCP-22ST-230 | ASSURITY 20' LIFT PUMP W/ 20' TUBING, CHECK VALVE, SAFETY SWITCH, AND 6' CORD - <b>230 VOLT</b> | \$64.95  |
| 104551  | QUIETMINI-M    | QUIETMINI-M UNDERMOUNT MINISPLIT PUMP MULTI-VOLTAGE   | \$114.95 |
| 104552  | QUIETMINI-I    | QUIETMINI-I INTERNAL MINISPLIT PUMP MULTI-VOLTAGE   | \$114.95 |
| 104526  | WS-1           | WS-1 WET SWITCH   | \$64.95  |
| 104527  | CC-1           | CC-1 CONDENSATE COP SAFETY SWITCH   | \$12.95  |
| 104531  | CS-3           | CS-3 CONDENSATE SAFETY FLOAT SWITCH   | \$11.95  |
| 729V03R | 5137           | 3/8" DRAIN HOSE-100' ROLL   | \$14.95  |
| 729V10R | 5150           | 1/2" DRAIN HOSE-100' ROLL   | \$21.95  |
| 729V20R | 5162           | 5/8" DRAIN HOSE-100' ROLL   | \$28.95  |







**CONDENSER PADS AND BRACKETS**

|          |          |  |          |
|----------|----------|--|----------|
| 1602436  | EP2436-2 | 24" X 36" X 2" CONDENSER PAD                         | \$31.95  |
| 1603030  | EP3030-2 | 30" X 30" X 2" CONDENSER PAD                         | \$29.95  |
| 1603232  | EP3232-2 | 32" X 32" X 2" CONDENSER PAD                         | \$33.95  |
| 16032323 | EP3232-3 | 32" X 32" X 3" CONDENSER PAD                         | \$42.95  |
| 1603636  | EP3636-2 | 36" X 36" X 2" CONDENSER PAD                         | \$39.95  |
| 16036363 | EP3636-3 | 36" X 36" X 3" CONDENSER PAD                         | \$49.95  |
| 16036483 | EP3648-3 | 36" X 48" X 3" CONEDNSER PAD                         | \$68.95  |
| 1604040  | EP4040-3 | 40" X 40" X 3" CONDENSER PAD                         | \$63.95  |
| 16036368 | HP3636-8 | 36" X 36" X 8" HEAT PUMP PAD                         | \$74.95  |
| 160006   | 4008     | 6" HEAT PUMP RISER                                   | \$3.79   |
| 160007   | 4007     | 6" HEAT PUMP RISER ADJUSTABLE SCREW TYPE             | \$4.59   |
| 160B36   | ACB-36   | 36" ANGLE IRON WALL BRACKET UP TO 600 LBS.           | \$58.95  |
| 160B42   | ACB-42   | 42" ANGLE IRON WALL BRACKET UP TO 600 LBS.           | \$53.95  |
| 160B48   | ACB-48   | 48" ANGLE IRON WALL BRACKET UP TO 600 LBS            | \$65.95  |
| 1601200  | QSMS1200 | MINI-SPLIT STAND NARROW 6-3/4" TO 1'-5/8" UNIT DEPTH | \$254.95 |
| 1601201  | QSMS1201 | MINI-SPLIT STAND WIDE 11-1/4" TO 1'-4-5/8"           | \$254.95 |
| 290002   | QSWB2000 | MINI-SPLIT WALL BRACKET UP TO 350 LBS.               | \$169.95 |
| 290001   | QSWI3000 | UNIT HEATER SWIVEL MOUNT UP TO 200 LBS.              | 199.95   |
| 160902   | 19709    | RUBBER "WAFFLE PAD" 2" X 2"                          | \$.69    |
| 160914   | 6134     | CORK / RUBBER PAD 4" X 4"                            | \$1.69   |



**WHIPS**

|        |   |         |
|--------|---|---------|
| 313500 | 4' LONG 1/2" WHIP - 1 STRAIGHT AND 1 90 DEGREE CONNECTOR - #10 WIRE | \$12.95 |
| 313501 | 6' LONG 1/2" WHIP - 1 STRAIGHT AND 1 90 DEGREE CONNECTOR - #10 WIRE | \$16.95 |
| 313503 | 6' LONG 3/4" WHIP - 1 STRAIGHT AND 1 90 DEGREE CONNECTOR - #8 WIRE  | \$22.95 |



**DISCONNECTS**

|         |                             |         |
|---------|-----------------------------|---------|
| 320003  | 60 AMP NON-FUSED DISCONNECT | \$18.95 |
| 320006A | 30 AMP FUSED DISCONNECT     | \$34.95 |
| 320008A | 60 AMP FUSED DISCONNECT     | \$34.95 |



**FLEXIBLE GAS CONNECTORS / GAS COCKS**

|        |   |         |
|--------|---|---------|
| 075018 | 18" COATED STAINLESS STEEL CONNECTOR 19517 5/8 O.D. X 1/2 MPT X 1/2 FPT | \$13.99 |
| 076400 | 1/2" FPT X 1/2" FPT GAS COCK  | \$5.49  |





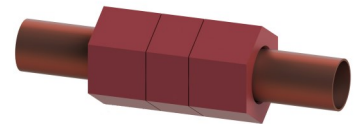
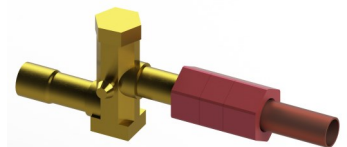
**ZOOMLOCK PUSH FLAME-FREE FITTINGS**

|        |                 |                                   |         |
|--------|-----------------|-----------------------------------|---------|
| 163602 | PZKP-C4-HNBR    | 1/4 ZOOMLOCK PUSH COUPLING        | \$11.95 |
| 163603 | PZKP-C6-HNBR    | 3/8 ZOOMLOCK PUSH COUPLING        | \$13.95 |
| 163604 | PZKP-C8-HNBR    | 1/2 ZOOMLOCK PUSH COUPLING        | \$14.95 |
| 163605 | PZKP-C10-HNBR   | 5/8 ZOOMLOCK PUSH COUPLING        | \$15.95 |
| 163606 | PZKP-C12-HNBR   | 3/4 ZOOMLOCK PUSH COUPLING        | \$23.95 |
| 163607 | PZKP-C14-HNBR   | 7/8 ZOOMLOCK PUSH COUPLING        | \$25.95 |
| 163612 | PZKP-F4-HNBR    | 1/4 ZOOMLOCK PUSH FLARE CONNECTOR | \$10.95 |
| 163613 | PZKP-F6-HNBR    | 3/8 ZOOMLOCK PUSH FLARE CONNECTOR | \$11.05 |
| 163614 | PZKP-F8-HNBR    | 1/2 ZOOMLOCK PUSH FLARE CONNECTOR | \$13.95 |
| 163615 | PZKP-F10-HNBR   | 5/8 ZOOMLOCK PUSH FLARE CONNECTOR | \$14.95 |
| 163624 | PZKP-90E8-HNBR  | 1/2 ZOOMLOCK PUSH 90 DEG. ELBOW   | \$17.95 |
| 163625 | PZKP-90E10-HNBR | 5/8 ZOOMLOCK PUSH 90 DEG. ELBOW   | \$18.95 |
| 163626 | PZKP-90E12-HNBR | 3/4 ZOOMLOCK PUSH 90 DEG. ELBOW   | \$28.95 |
| 163627 | PZKP-90E14-HNBR | 7/8 ZOOMLOCK PUSH 90 DEG. ELBOW   | \$30.95 |
| 163628 | PZKP-IK         | ZOOMLOCK PUSH INSTALLATION KIT    | \$24.95 |



**SMARTLOCK FLAME-FREE FITTINGS**

|        |          |                          |         |
|--------|----------|--------------------------|---------|
| 163570 | SWUN3800 | 3/8 SWAGE UNION          | \$19.95 |
| 163571 | SWUN3400 | 3/4 SWAGE UNION          | \$34.95 |
| 163572 | SWUN7800 | 7/8 SWAGE UNION          | \$39.95 |
| 163573 | ELSW3800 | 3/8 SWAGE ELBOW          | \$19.95 |
| 163574 | ELSW3400 | 3/4 SWAGE ELBOW          | \$48.45 |
| 163575 | ELSW7800 | 7/8 SWAGE ELBOW          | \$40.95 |
| 163576 | UNST3800 | 3/8 STRAIGHT UNION       | \$18.50 |
| 163577 | UNST3400 | 3/4 STRAIGHT UNION       | \$30.95 |
| 163578 | UNST7800 | 7/8 STRAIGHT UNION       | \$36.25 |
| 163579 | ELUN3400 | 3/4 ELBOW UNION          | \$29.95 |
| 163580 | ELUN7800 | 7/8 ELBOW UNION          | \$44.95 |
| 163581 | FMCA1400 | 1/4 MALE FLARE CONNECTOR | \$10.95 |
| 163582 | FMCA3800 | 3/8 MALE FLARE CONNECTOR | \$12.95 |
| 163583 | FMCA1200 | 1/2 MALE FLARE CONNECTOR | \$14.95 |
| 163584 | FMCA5800 | 5/8 MALE FLARE CONNECTOR | \$18.45 |



# ZoomLock MAX



| AMS ITEM                            | PARKER #          | DESCRIPTION                           | PKG | EACH    |
|-------------------------------------|-------------------|---------------------------------------|-----|---------|
| <b>STANDARD COUPLINGS</b>           |                   |                                       |     |         |
| 162ZC03                             | MZK-C6-HNBR       | 3/8 COUPLING ZOOMLOCK MAX             | 5   | \$7.95  |
| 162ZC06                             | MZK-C12-HNBR      | 3/4 COUPLING ZOOMLOCK MAX             | 2   | \$13.95 |
| 162ZC07                             | MZK-C14-HNBR      | 7/8 COUPLING ZOOMLOCK MAX             | 2   | \$19.95 |
| <b>SLIP COUPLINGS</b>               |                   |                                       |     |         |
| 162ZC03S                            | MZK-RC6-HNBR      | 3/8 SLIP COUPLING ZOOMLOCK MAX        | 5   | \$10.95 |
| 162ZC04S                            | MZK-RC8-HNBR      | 1/2 SLIP COUPLING ZOOMLOCK MAX        | 5   | \$11.95 |
| 162ZC06S                            | MZK-RC12-HNBR     | 3/4 SLIP COUPLING ZOOMLOCK MAX        | 2   | \$17.95 |
| 162ZC07S                            | MZK-RC14-HNBR     | 7/8 SLIP COUPLING ZOOMLOCK MAX        | 2   | \$18.95 |
| 162ZC09S                            | MZK-RC18-HNBR     | 1-1/8 SLIP COUPLING ZOOMLOCK MAX      | 1   | \$23.95 |
| <b>90 DEGREE STANDARD ELBOWS</b>    |                   |                                       |     |         |
| 162ZE03                             | MZK-90E6-HNBR     | 3/8 ELBOW 90 ZOOMLOCK MAX             | 5   | \$14.95 |
| 162ZE06                             | MZK-90E12-HNBR    | 3/4 ELBOW 90 ZOOMLOCK MAX             | 3   | \$21.95 |
| 162ZE07                             | MZK-90E14-HNBR    | 7/8 ELBOW 90 ZOOMLOCK MAX             | 3   | \$21.95 |
| <b>90 DEGREE STREET ELBOWS</b>      |                   |                                       |     |         |
| 162ZE06S                            | MZK-90SE12-HNBR   | 3/4 STREET 90 ZOOMLOCK MAX            | 3   | \$26.95 |
| 162ZE07S                            | MZK-90SE14-HNBR   | 7/8 STREET 90 ZOOMLOCK MAX            | 3   | \$29.95 |
| 162ZE09S                            | MZK-90SE18-HNBR   | 1-1/8 STREET 90 ZOOMLOCK MAX          | 2   | \$31.95 |
| <b>45 DEGREE ELBOWS</b>             |                   |                                       |     |         |
| 162ZE4506                           | MZK-45E12-HNBR    | 3/4 45 ELBOW ZOOMLOCK MAX             | 3   | \$26.95 |
| 162ZE4507                           | MZK-45E14-HNBR    | 7/8 45 ELBOW ZOOMLOCK MAX             | 3   | \$29.95 |
| <b>90 DEGREE LONG RADIUS ELBOWS</b> |                   |                                       |     |         |
| 162ZL04                             | MZK-90E8-LR-HNBR  | 1/2 LR 90 ZOOMLOCK MAX                | 3   | \$16.95 |
| 162ZL06                             | MZK-90E12-LR-HNBR | 3/4 LR 90 ZOOMLOCK MAX                | 2   | \$22.95 |
| 162ZL07                             | MZK-90E14-LR-HNBR | 7/8 LR 90 ZOOMLOCK MAX                | 2   | \$21.95 |
| 162ZL09                             | MZK-90E18-LR-HNBR | 1-1/8 LR 90 ZOOMLOCK MAX              | 1   | \$28.95 |
| <b>REDUCERS</b>                     |                   |                                       |     |         |
| 162ZR0506                           | MZK-R1410-HNBR    | 5/8 X 3/4 REDUCER ZOOMLOCK MAX        | 2   | \$23.95 |
| 162ZR0607                           | MZK-R1412-HNBR    | 3/4 X 7/8 REDUCER ZOOMLOCK MAX        | 2   | \$24.95 |
| 162ZR0609                           | MZK-R1812-HNBR    | 3/4 X 1-1/8 REDUCER ZOOMLOCK MAX      | 1   | \$25.95 |
| 162ZR0709                           | MZK-R1814-HNBR    | 7/8 X 1-1/8 REDUCER ZOOMLOCK MAX      | 1   | \$29.95 |
| <b>ZOOMLOCK MAX SUNDRY ITEMS</b>    |                   |                                       |     |         |
| 068ZD963                            | 761806            | BIFLOW 163 3/8 ZOOMLOCK DRIER 16 C.I. | 1   | \$44.95 |
| 068ZD083                            | 450282-001        | 083 3/8 ZOOMLOCK DRIER 8 C.I.         | 1   | \$18.95 |
| 068ZD163                            | 450287-001        | 163 3/8 ZOOMLOCK DRIER 16 C.I.        | 1   | \$24.95 |
| 162ZA01                             | MZK-IK            | ZOOMLOCK INSTALL KIT                  | 1   | \$20.95 |



## **ECM REPLACEMENT BLOWER MOTORS**

### **ALL RESCUE ECM MODELS FEATURE:**

- **115/208/230 VOLT OPERATION**
- **NO CAPACITOR REQUIRED**
- **REVERSIBLE ROTATION**
- **BALL BEARINGS**
- **TWO YEAR WARRANTY**
- **STANDARD 5.6" DIAMETER 48 FRAME**

| <b>US MOTORS RESCUE ECOTECH 115/208/230 VOLT ECM UPGRADE FOR PSC MOTORS</b> |        |                                     |          |
|---|--------|-------------------------------------|----------|
| 005731  | 5522ET | 1/3 THROUGH 1/5 HP 115/208/230 VOLT | \$262.95 |
| 005732  | 5532ET | 1/2 THROUGH 1/4 HP 115/208/230 VOLT | \$272.95 |
| 005733  | 5542ET | 3/4 THROUGH 1/3 HP 115/208/230 VOLT | \$309.95 |
| 005734  | 5552ET | 1 THROUGH 1/2 HP 115/208/230 VOLT   | \$348.95 |



| <b>US MOTORS RESCUE EZ13 115/208/230 VOLT X-13 ECM MOTORS</b> |      |                                     |          |
|---|------|-------------------------------------|----------|
| 005750  | 5632 | 1/2 THROUGH 1/3 HP 115/208/230 VOLT | \$238.95 |
| 005751  | 5642 | 3/4 HP 115/208/230 VOLT             | \$257.95 |
| 005752  | 5652 | 1 HP 115/208/230 VOLT               | \$271.95 |



| <b>US MOTORS RESCUE SELECT PRO BLUETOOTH PROGRAMMABLE 115/208/230 VOLT X-13 ECM MOTORS</b> |      |                                     |          |
|--|------|-------------------------------------|----------|
| 005740   | 6633 | 1/2 THROUGH 1/3 HP 115/208/230 VOLT | \$261.95 |
| 005741   | 6643 | 3/4 HP 115/208/230 VOLT             | \$283.99 |
| 005742   | 6653 | 1 HP 115/208/230 VOLT               | \$299.95 |



| <b>US MOTORS RESCUE EZ16 115/208/230 16 PIN ECM REPLACEMENT MOTORS</b> |      |                                     |          |
|--|------|-------------------------------------|----------|
| 005781   | 5863 | 1/3 HP 115/208/230 VOLT             | \$389.95 |
| 005782   | 5862 | 1/2 THROUGH 1/3 HP 115/208/230 VOLT | \$428.95 |
| 005783   | 5861 | 3/4 THROUGH 1/3 HP 115/208/230 VOLT | \$465.99 |
| 005786   | 5860 | 1 THROUGH 1/3 HP 115/208/230 VOLT   | \$469.95 |



**TUNING MODULE INCLUDED WITH EVERY EZ16 MOTOR**



There are many imitations but only one Rescue<sup>®</sup>.

**WHY USE A RESCUE MULTI-HORSEPOWER PSC REPLACEMENT MOTOR?**

**RESCUE MOTORS ARE ENGINEERED FOR MULTIPLE HORSEPOWER DUTY!**

- RESCUE<sup>®</sup> PSC MOTORS ARE BUILT TO MATCH HORSEPOWER REQUIREMENTS AND SPEED FOR EACH APPLIACTION
- MOST STANDARD DIRECT DRIVES HAVE A BIG RPM GAP BETWEEN THE HIGH AND LOW SPEEDS
- STANDARD DIRECT DRIVE MOTORS DO NOT GIVE THE CORRECT SPEED (DUE TO SPEED/HP SPACING) WHEN APPLIED TO A NON-RATED HORSEPOWER LOAD
- THIS CAN LEAD TO OVERHEATING

RESCUE<sup>®</sup> MOTORS HAVE MORE COPPER (WINDINGS) AND IRON (ROTOR) TO PREVENT OVERHEATING  
THIS MAKES RESCUE<sup>®</sup> MOTORS STRONGER



| US MOTORS RESCUE MULTI-HORSEPOWER CONDENSER MOTORS |      |   |          |
|--|------|---|----------|
| 001R3323   | 5462 | 1/3 - 1/4 - 1/5 - 1/6 HP - 1075 RPM - REVERSIBLE - USE 5X370  | \$119.95 |
| 001R3322   | 5464 | 1/3 - 1/4 - 1/5 - 1/6 HP - 825 RPM - REVERSIBLE - USE 7.5X370 | \$157.95 |
| 001R5021   | 5465 | 1/2 - 1/3 - 1/4 - 1/5 HP - 1075 RPM - REVERSIBLE - USE 10X370 | \$153.95 |

**RHEEM/RUUD SHELL HOLES - LEAD END SELF TAPPING SCREWS - EXTENDED THROUGH BOLTS**  
**48" LEADS WITH FLAG TERMINALS**



| US MOTORS RESCUE MULTI-HORSEPOWER BLOWER MOTORS     |      |  |          |
|---|------|--|----------|
| 001R5010  | 5460 | 115 VOLT - 1/6 TO 1/2 HP - 4 SPEED - 1075 RPM - REVERSIBLE - USE 7.5 OR 10X370*    | \$115.95 |
| 001R7510  | 5470 | 115 VOLT - 1/5 TO 3/4 HP - 4 SPEED - 1075 RPM - REVERSIBLE - USE 10 OR 20X370*     | \$138.95 |
| 001R5020  | 5461 | 208/230 VOLT - 1/6 TO 1/2 HP - 4 SPEED - 1075 RPM - REVERSIBLE - USE 5 OR 10X370*  | \$118.95 |
| 001R7520  | 5471 | 208/230 VOLT - 1/5 TO 3/4 HP - 4 SPEED - 1075 RPM - REVERSIBLE - USE 10 OR 20X370* | \$141.95 |
| 001R5023  | 5469 | 208/230 VOLT - 1/8 TO 1/3 HP - 4 SPEED - 825 RPM - REVERSIBLE - USE 7.5X370        | \$286.95 |
| *-USE LARGER CAPACITOR AT HIGHEST HORSEPOWER RATING |      |  |          |

**RHEEM / RUUD SHELL HOLES - EXTENDED THROUGH BOLTS - 2-1/2" RESILIENT RINGS**



## GENERAL REPLACEMENT CONDENSER MOTORS

| US MOTORS UNIVERSAL REPLACEMENT CONDENSER MOTORS |      |  |          |
|--|------|--|----------|
| 001C2520   | 1860 | 1/4 HP - BAND, THRU BOLT, SHELL SCREW MTG<br>USE 5X370   | \$95.95  |
| 001C3320   | 1861 | 1/3 HP - BAND, THRU BOLT, SHELL SCREW MTG<br>USE 7.5X370 | \$104.95 |
| 001C5020   | 1878 | 1/2 HP - BAND OR THROUGH BOLT MTG<br>USE 10X370          | \$115.95 |

| US MOTORS AFTERMARKET REPLACEMENTS FOR FASCO RHEEM / RUUD CONDENSER MOTORS |      |  |          |
|--|------|--|----------|
| 001C2020   | 5454 | 1/5 HP - 1075 RPM - REVERSIBLE - USE 3X370<br>REPLACES FASCO D2840 | \$122.95 |
| 001C3321   | 5455 | 1/3 HP - 1075 RPM - REVERSIBLE - USE 5X370<br>REPLACES FASCO D2834 | \$148.95 |



**TOTALLY ENCLOSED - EXTENDED THROUGH BOLTS - DEDICATED REVERSE LEADS**

**SIMPLE WIRING - TWO POWER LEADS AND TWO BROWN CAPACITOR LEADS**



## GENERAL REPLACEMENT BLOWER MOTORS

| US MOTORS UNIVERSAL REPLACEMENT DIRECT DRIVE BLOWER MOTORS |      |   |          |
|--|------|---|----------|
| 001G2510   | 1863 | 1/4 HP - 3 SPEED - 115 VOLT BLOWER MOTOR<br>USE 7.5X370     | \$102.95 |
| 001G3310   | 1864 | 1/3 HP - 3 SPEED - 115 VOLT BLOWER MOTOR<br>USE 7.5X370     | \$106.95 |
| 001G5010   | 5840 | 1/2 HP - 4 SPEED - 115 VOLT BLOWER MOTOR<br>USE 7.5X370     | \$132.95 |
| 001G7510   | 5463 | 3/4 HP - 3 SPEED - 115 VOLT BLOWER MOTOR<br>USE 15X370      | \$165.95 |
| 001E2521   | 1971 | 1/4 HP - 3 SPEED - 208/230 VOLT BLOWER MOTOR<br>USE 7.5X370 | \$104.95 |
| 001E3322   | 1972 | 1/3 HP - 3 SPEED - 208/230 VOLT BLOWER MOTOR<br>USE 7.5X370 | \$111.95 |
| 001E5020   | 1973 | 1/2 HP - 3 SPEED - 208/230 VOLT BLOWER MOTOR<br>USE 10X370  | \$129.95 |
| 001E7520   | 8905 | 3/4 HP - 3 SPEED - 208/230 VOLT BLOWER MOTOR<br>USE 15X370  | \$149.95 |



**REVERSIBLE - EXTENDED THROUGH BOLTS - 2-1/2" RESILIENT RINGS**



**RHEEM / RUUD GENUINE PARTS  
BEST SELLING MOTORS**



| <b>GENUINE RHEEM / RUUD OEM CONDENSER MOTORS</b>            |             |  |          |
|---|-------------|--|----------|
| 2691245   | 51-23055-11 | 1/5 HP - 1075 RPM - REVERSIBLE<br>USE 3 OR 5X370   | \$130.95 |
| 2691242   | 51-23053-11 | 1/3 HP - 1075 RPM - REVERSIBLE<br>USE 5 OR 7.5X370 | \$142.95 |
| 2695512   | 51-23055-12 | 1/5 HP - 825 RPM - REVERSIBLE<br>USE 5 OR 7.5X370  | \$154.95 |
| <b>USE SMALLER MFD ON 230 VOLT / LARGER MFD ON 208 VOLT</b> |             |  |          |



**TOTALLY ENCLOSED - RHEEM / RUUD SHELL HOLES - EXTENDED THROUGH BOLTS - REVERSIBLE**

| <b>GENUINE RHEEM / RUUD TRIPSAVER BLOWER MOTORS</b> |             |   |          |
|---|-------------|---|----------|
| 2691241   | 51-23012-41 | 1/2 HP - 115 VOLT BLOWER MOTOR<br>1075 RPM / 4 SPEED - USE 10X370 | \$179.95 |
| 2691741   | 51-23017-42 | 3/4 HP - 115 VOLT BLOWER MOTOR<br>1075 RPM / 4 SPEED USE 15X370   | \$209.95 |



**MULTI- HORSEPOWER DESIGN - RHEEM / RUUD SHELL HOLES - EXTENDED THROUGH BOLTS - REVERSIBLE**

**TWO MODELS REPLACE MOST PSC BLOWER MOTORS USED IN PAST RHEEM AND RUUD FURNACES**

**BLOWER MOTOR BRACKETS  
FOR UPGRADE OR REPLACEMENT**



**007036**



**2651742, 1251743**



**007047, 007048**



**007039**



**007037**

| <b>MOTOR MOUNTING BRACKET KITS</b> |             |  |         |
|------------------------------------|-------------|--|---------|
| 007036                             | 08028       | BELLY BAND KIT TO RETROFIT RHEEM<br>SHELL SCREW BRACKETS | \$79.95 |
| 2651743                            | AE-58384-81 | SHELL SCREW BRACKETS FOR<br>AIR HANDLERS - SET OF 4      | \$26.95 |
| 2651742                            | AE-61698-82 | SHELL SCREW BRACKETS FOR<br>GAS FURNACES - SET OF 4      | \$22.95 |
| 007047                             | 17          | WIRE BELLY BAND MOUNT WITH 3 LEGS<br>10" BLOWERS         | \$29.95 |
| 007048                             | 23          | WIRE BELLY BAND MOUNT WITH 3 LEGS<br>11" BLOWERS         | \$33.95 |
| 007039                             | 39          | TORSION FLEX MOUNT WITH 4 LEGS                           | \$28.95 |
| 007037                             | 44          | TORSION FLEX MOUNT WITH 3 LEGS                           | \$23.95 |

| UNIVERSAL TURBO CAPACITORS |                |  |         |
|----------------------------|----------------|--|---------|
| 061910                     | TURBO 200 MINI | TURBO 2.5 TO 15 MFD X 370/440 TURBO UNIVERSAL CAPACITOR      | \$9.95  |
| 061900                     | TURBO 200      | TURBO 2.5 TO 67.5 MFD X 370/440 TURBO UNIVERSAL CAPACITOR    | \$56.95 |
| 061905                     | TURBO 200X     | TURBO 70 TO 97.5 MFD X 370/440 TURBO UNIVERSAL RUN CAPACITOR | \$76.95 |



| US MADE OVAL RUN CAPACITORS |         |                               |        |
|-----------------------------|---------|-------------------------------|--------|
| 057001                      | USA2029 | 5 MFD 370/440V OVAL RUN CAP   | \$5.95 |
| 057002                      | USA2031 | 7.5 MFD 370/440V OVAL RUN CAP | \$6.95 |
| 057003                      | USA2035 | 10 MFD 370/440V OVAL RUN CAP  | \$7.95 |



| US MADE ROUND RUN CAPACITORS |         |                                 |         |
|------------------------------|---------|---------------------------------|---------|
| 057050                       | USA2204 | 5 MFD 370/440V ROUND RUN CAP    | \$6.95  |
| 057075                       | USA2206 | 7.5 MFD 370/440V ROUND RUN CAP  | \$7.45  |
| 057100                       | USA2207 | 10 MFD 370/440V ROUND RUN CAP   | \$8.45  |
| 057125                       | USA2208 | 12.5 MFD 370/440V ROUND RUN CAP | \$9.45  |
| 057150                       | USA2209 | 15 MFD 370/440V ROUND RUN CAP   | \$8.95  |
| 057200                       | USA2211 | 20 MFD 370/440V ROUND RUN CAP   | \$10.99 |
| 057250                       | USA2212 | 25 MFD 370/440V ROUND RUN CAP   | \$10.99 |
| 057300                       | USA2213 | 30 MFD 370/440V ROUND RUN CAP   | \$12.95 |
| 057350                       | USA2214 | 35 MFD 370/440V ROUND RUN CAP   | \$14.95 |
| 057400                       | USA2215 | 40 MFD 370/440V ROUND RUN CAP   | \$15.95 |
| 057450                       | USA2216 | 45 MFD 370/440V ROUND RUN CAP   | \$16.95 |
| 057500                       | USA2217 | 50 MFD 370/440V ROUND RUN CAP   | \$18.95 |
| 057550                       | USA2218 | 55 MFD 370/440V ROUND RUN CAP   | \$19.95 |
| 057600                       | USA2219 | 60 MFD 370/440V ROUND RUN CAP   | \$21.95 |
| 057700                       | USA2228 | 70 MFD 370/440V ROUND RUN CAP   | \$26.95 |
| 057800                       | USA2229 | 80 MFD 370/440V ROUND RUN CAP   | \$37.95 |







## US MADE ROUND DUAL RUN CAPACITORS

|         |           |                                   |         |
|---------|-----------|-----------------------------------|---------|
| 0572505 | USA2225   | 25/5 MFD 370/440V ROUND RUN CAP   | \$14.45 |
| 0573003 | USA2227BA | 30/3 MFD 370/440V ROUND RUN CAP   | \$15.95 |
| 0573005 | USA2226   | 30/5 MFD 370/440V ROUND RUN CAP   | \$17.95 |
| 0573503 | USA2226BA | 35/3 MFD 370/440V ROUND RUN CAP   | \$16.95 |
| 0573505 | USA2227   | 35/5 MFD 370/440V ROUND RUN CAP   | \$17.95 |
| 0573507 | USA2291   | 35/7.5 MFD 370/440V ROUND RUN CAP | \$18.95 |
| 0573510 | USA2227B  | 35/10 MFD 370/440V ROUND RUN CAP  | \$18.95 |
| 0574005 | USA2235   | 40/5 MFD 370/440V ROUND RUN CAP   | \$21.95 |
| 0574007 | USA2232   | 40/7.5 MFD 370/440V ROUND RUN CAP | \$21.95 |
| 0574010 | USA2232A  | 40/10 MFD 370/440V ROUND RUN CAP  | \$21.95 |
| 0574505 | USA2236   | 45/5 MFD 370/440V ROUND RUN CAP   | \$22.95 |
| 0574575 | USA2233   | 45/7.5 MFD 370/440V ROUND RUN CAP | \$22.95 |
| 0574510 | USA2234   | 45/10 MFD 370/440V ROUND RUN CAP  | \$22.95 |
| 0575005 | USA2237   | 50/5 MFD 370/440V ROUND RUN CAP   | \$23.95 |
| 0575007 | USA2238   | 50/7.5 MFD 370/440V ROUND RUN CAP | \$23.95 |
| 0575505 | USA2240   | 55/5 MFD 370/440V ROUND RUN CAP   | \$24.95 |
| 0575507 | USA2218A  | 55/7.5 MFD 370/440V ROUND RUN CAP | \$24.95 |
| 0575510 | USA2218BA | 55/10 MFD 370/440V ROUND RUN CAP  | \$24.95 |
| 0576005 | USA2219   | 60/5MFD 370/440V ROUND RUN CAP    | \$26.95 |
| 0576007 | USA2221B  | 60/7.5MFD 370/440V ROUND RUN CAP  | \$26.95 |
| 0576010 | USA2221BA | 60/10 MFD 370/440V ROUND RUN CAP  | \$27.95 |
| 0577005 | USA2221   | 70/5 MFD 370/440V ROUND RUN CAP   | \$30.95 |
| 0577007 | USA2222A  | 70/7.5 MFD 370/440V ROUND RUN CAP | \$30.95 |
| 0577010 | USA2220BA | 70/10 MFD 370/440V ROUND RUN CAP  | \$33.95 |
| 0578005 | USA2222BA | 80/5 MFD 370/440V ROUND RUN CAP   | \$35.95 |
| 0578007 | USA2223B  | 80/7.5 MFD 370/440V ROUND RUN CAP | \$37.95 |
| 0578010 | USA2223BA | 80/10 MFD 370/440V ROUND RUN CAP  | \$37.95 |

## MARS 370 VAC OVAL RUN CAPACITORS

|        |       |                                 |        |
|--------|-------|---------------------------------|--------|
| 054030 | 12903 | 3 MFD - 370 VAC OVAL RUN CAP    | \$2.45 |
| 054040 | 12904 | 4 MFD - 370 VAC OVAL RUN CAP    | \$2.45 |
| 054050 | 12905 | 5 MFD - 370 VAC OVAL RUN CAP    | \$1.95 |
| 054075 | 12907 | 7.5 MFD - 370 VAC OVAL RUN CAP  | \$2.25 |
| 054100 | 12908 | 10 MFD - 370 VAC OVAL RUN CAP   | \$2.45 |
| 054125 | 12009 | 12.5 MFD - 370 VAC OVAL RUN CAP | \$7.95 |
| 054150 | 12910 | 15 MFD - 370 VAC OVAL RUN CAP   | \$6.45 |

**START ASSISTS**

|        |         |   |         |
|--------|---------|---|---------|
| 044005 | 32701   | SOLID STATE START ASSIST                    | \$13.95 |
| 044006 | 32702   | SOLID STATE START ASSIST                    | \$18.95 |
| 044009 | 42-TO5  | KICKSTART 1.5 THROUGH 3 TON                 | \$58.95 |
| 044010 | 42-KS-1 | KICKSTART 3.5 THROUGH 5 TON                 | \$65.95 |
| 044018 | CSR-U1  | 3 WIRE TRUE HARD START KIT<br>1.5 TO 3 TONS | \$38.95 |
| 044020 | CSR-U2  | 3 WIRE TRUE HARD START KIT<br>3.5 TO 5 TONS | \$46.95 |



044005, 044006



044009



044010



044018, 044020

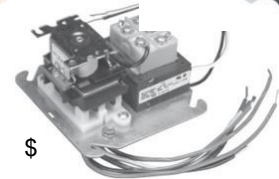
**CONTACTORS**

|         |       |                                |         |
|---------|-------|--------------------------------|---------|
| 038130F | 91311 | 1 POLE - 30 AMP - 24 VOLT COIL | \$8.45  |
| 038230F | 91321 | 2 POLE - 30 AMP - 24 VOLT COIL | \$9.95  |
| 0383300 | 91335 | 3 POLE - 30 AMP - 24 VOLT COIL | \$22.95 |
| 038140F | 91411 | 1 POLE - 40 AMP - 24 VOLT COIL | \$10.95 |
| 038240F | 91421 | 2 POLE - 40 AMP - 24 VOLT COIL | \$12.95 |
| 0383411 | 91431 | 3 POLE - 40 AMP - 24 VOLT COIL | \$39.95 |



**TRANSFORMERS**

|        |         |  |         |
|--------|---------|--|---------|
| 049304 | 90T40M3 | 40 VA - 120/208/240V PRI - FOOT, 4X4 PLATE,<br>OR 1/2" KNOCKOUT MTG. | \$23.95 |
| 049354 | 90T40F3 | 40 VA - 120/208/240V PRI - FOOT MOUNT                                | \$17.95 |
| 049321 | 90T75C3 | 75 VA - 120/208/240V PRI - FOOT MOUNT WITH<br>CIRCUIT BREAKER        | \$56.95 |
| 036113 | 90-113  | FAN CENTER - 4X4 PLATE W/ SPDT FAN RELAY                             | \$32.95 |



**RELAYS**

|        |       |  |         |
|--------|-------|--|---------|
| 036293 | 90293 | SPDT - 24 VOLT COIL - 8 A @ 125VAC         | \$13.95 |
| 036370 | 90370 | SPDT - 24 VOLT COIL - 14 A @ 125VAC        | \$13.95 |
| 036406 | 90380 | SPNO/SPNC - 24 VOLT COIL - 14 A @ 125VAC   | \$13.95 |
| 036340 | 90340 | DPDT - 24 VOLT COIL - 13.8 A @ 125VAC      | \$16.95 |
| 036342 | 90342 | DPDT - 208/203 VOLT COIL - 13.8 A @ 125VAC | \$16.95 |



**TIME DELAYS**

|        |             |   |         |
|--------|-------------|---|---------|
| 042307 | 42-ICM102FB | TIME DELAY - DELAY ON MAKE<br>ADJUSTABLE .03 TO 10 MIN - 18-240VAC  | \$19.95 |
| 042309 | ICM-203B    | TIME DELAY - DELAY ON BREAK<br>ADJUSTABLE .03 TO 10 MIN - 18-240VAC | \$18.95 |





| <b>SEQUENCERS</b> |         |   |         |
|-------------------|---------|---|---------|
| 082342            | 24A34-2 | 1 SWITCH - ON 30-90 SECONDS, OFF 1-30 SECONDS       | \$11.80 |
| 042002            | 24A34-3 | 2 SWITCHES - ON 1-20 SECONDS, OFF 40-110 SECONDS    | \$13.50 |
| 042006            | 24A34-4 | 2 SWITCHES - ON 30-90 SECONDS, OFF 1-30 SECONDS     | \$13.50 |
| 042004            | 24A34-6 | 4 SWITCHES - M1-M2 AND M3-M4 ARE FIRST ON, LAST OFF | \$25.95 |



| <b>ADJUSTABLE DISC TYPE FAN AND LIMIT CONTROLS</b> |        |   |         |
|--|--------|---|---------|
| 081051   | 3F05-1 | FAN SWITCH 90-130 DEGREE W/ 20 DEGREE DIFFERENTIAL    | \$16.80 |
| 081052   | 3F05-2 | FAN SWITCH 140-180 DEGREE W/ 20 DEGREE DIFFERENTIAL   | \$16.80 |
| 082012   | 3L05-1 | LIMIT SWITCH 135-175 DEGREE W/ 40 DEGREE DIFFERENTIAL | \$16.80 |
| 082013   | 3L05-2 | LIMIT SWITCH 175-215 DEGREE W/ 40 DEGREE DIFFERENTIAL | \$16.80 |



| <b>INSERT TYPE COMBINATION FAN/LIMIT CONTROLS</b> |         |                                   |          |
|---|---------|-----------------------------------|----------|
| 08135   | 5D51-35 | 5" COMBINATION FAN/LIMIT CONTROL  | \$125.95 |
| 08178   | 5D51-78 | 8" COMBINATION FAN/LIMIT CONTROL  | \$125.95 |
| 08190   | 5D51-90 | 11" COMBINATION FAN/LIMIT CONTROL | \$125.95 |



| <b>HONEYWELL BULLSEYE THERMOCOUPLES</b> |           |                                     |         |
|---|-----------|-------------------------------------|---------|
| 0761074                                 | Q340A1074 | 24" HONEYWELL BULLSEYE THERMOCOUPLE | \$11.95 |
| 0761082                                 | Q340A1082 | 30" HONEYWELL BULLSEYE THERMOCOUPLE | \$12.95 |
| 076560                                  | Q340A1090 | 36" HONEYWELL BULLSEYE THERMOCOUPLE | \$13.50 |



| <b>WHITE-RODGERS UNIVERSAL THERMOCOUPLES</b> |         |  |        |
|--|---------|--|--------|
| 076024                                       | H06E-24 | 24" WHITE-RODGERS UNIVERSAL THERMOCOUPLE | \$6.50 |
| 076031                                       | H06E-30 | 30" WHITE-RODGERS UNIVERSAL THERMOCOUPLE | \$6.75 |
| 076036                                       | H06E-36 | 36" WHITE-RODGERS UNIVERSAL THERMOCOUPLE | \$6.99 |



## UNIVERSAL REPLACEMENT GAS VALVES

|         |               |   |          |
|---------|---------------|---|----------|
| 076055  | VR8200A2132/U | TRADELINE STANDING PILOT VALVE 1/2" IN W/ LP KIT, 3/4" FLANGE. AND 3/8" BUSHING             | \$131.85 |
| 076050  | VR8345M4302/U | TRADELINE UNIVERSAL SPARK, HOT SURFACE, OR DIRECT IGNITION VALVE                            | \$159.95 |
| 0763300 | 36C03-300     | WHITE-RODGERS STANDING PILOT VALVE 1/2" IN W/ LP KIT AND BUSHINGS                           | \$114.95 |
| 0763003 | Y8610U6006/U  | TRADELINE COMPLETE SPARK IGNITION KIT W/ GAS VALVE, MODULE, IGNITOR, AND HARNESS- NAT OR LP | \$399.95 |



## IGNITION CONTROLS

|         |              |  |          |
|---------|--------------|--|----------|
| 0761003 | S8610U3009/U | TRADELINE UNIVERSAL INTERMITTANT PILOT MODULE  | \$131.95 |
| 2729023 | 5059-23      | WHITE-RODGERS INTERMITTANT PILOT SPARK MODULE  | \$129.95 |
| 076843  | 50E47U-843   | WHITE-RODGERS UNIVERSAL HOT SURFACE MODULE   | \$167.95 |
| 076304  | 50M56X-843   | WHITE-RODGERS UNIVERSAL HOT SURFACE INTEGRATED CONTROL MODULE W/ NITRIDE IGNITOR AND HARNESSES               | \$177.95 |
| 076842  | 50D50U-843   | WHITE-RODGERS UNIVERSAL SPARK IGNITION MODULE REPLACES OVER 800 INTERMITTANT PILOT AND DIRECT SPARK CONTROLS | \$121.95 |
| 2717801 | 62-22578-01  | ROBERTSHAW HOT SURFACE IGNITION MODULE RHEEM/ RUUD 62-22578-01   | \$74.95  |



## HOT SURFACE IGNITORS

|         |             |   |         |
|---------|-------------|---|---------|
| 076846  | Q3200U1004  | HONEYWELL GLOWFLY UNIVERSAL HSI   | \$44.95 |
| 076303  | 21D64-2     | WHITE-RODGERS HOT ROD UNIVERSAL HSI   | \$29.95 |
| 076A361 | 767A-361    | REPLACES 41-405, DETROIT RADIANT, YORK  | \$16.95 |
| 076A369 | 767A-369    | REPLACES 41-401, AMANA  | \$19.95 |
| 076A370 | 767A-370    | 2" WIDE BASE REPLACES 41-403, 41-404, 41-407, 41-409 CARRIER, DUCANE, RAYPACK, SNYDER GENERAL, TRANE, WEIL-MC CLEAN | \$17.95 |
| 076A371 | 767A-371    | REPLACES 41-402, 41-410, ARMSTRONG, COLEMAN, EVCON, MOR-FLO, NORDYNE, TRANE, WILLIAMSON                             | \$18.95 |
| 076A372 | 767A-372    | REPLACES 41-408, 41-411, RHEEM, TRANE   | \$17.95 |
| 076A373 | 767A-373    | REPLACES 41-412, 41-414, ARCOAIRE, COMFORTMAKER, GOODMAN, HEIL, ICP, PERFECTION-SCHWANK, TEMPSTAR                   | \$17.95 |
| 2726239 | 62-22868-93 | RHEEM OEM IGNITOR 62-22868-93   | \$29.95 |





| LIQUID DRIERS |             |   |         |
|---------------|-------------|---|---------|
| 068083A       | 83-25151-41 | 083S 3/8" LIQUID DRIER - 8 CUBIC INCH         | \$11.95 |
| 068163A       | 83-25151-42 | 163S 3/8" LIQUID DRIER - 16 CUBIC INCH        | \$12.95 |
| 068963A       | 83-25152-10 | BF163S 3/8" BI-FLOW HEAT PUMP DRIER - 16 C.I. | \$18.95 |



| SUCTION DRIERS |             |  |         |
|----------------|-------------|--|---------|
| 068268AS       | 83-25210-02 | 3/4" COMPACT SUCTION DRIER - 14 CUBIC INCH | \$52.95 |
| 068264AS       | 83-25210-03 | 7/8" COMPACT SUCTION DRIER - 14 CUBIC INCH | \$53.95 |



| SOLDERING SUPPLIES |             |   |         |
|--------------------|-------------|---|---------|
| 120015             | 15620F1     | HARRIS STAY-SILV 15% BRAZING ROD - 1 LB. TUBE | Call    |
| 120660             | 83-25454-05 | HARRIS DYNAFLOW 6% BRAZING ROD - 1 LB TUBE    | Call    |
| 120020             | SB861       | HARRIS STAY-BRITE #8 - 1 LB ROLL              | Call    |
| 120204P            | 86-25254-04 | HARRIS STAY-CLEAN PASTE FLUX - 4 OZ. W/BRUSH  | \$5.45  |
| 120242             | 8971        | SAND CLOTH - 10 YARD ROLL                     | \$4.85  |
| 454900             | 9000        | HOT DAM HEAT SINK PUTTY                       | \$22.95 |
| 1358802            | 9111        | 3/8" FITTING BRUSH                            | \$3.95  |
| 1358804            | 9113        | 5/8" FITTING BRUSH                            | \$3.95  |
| 1358805            | 9114        | 3/4" FITTING BRUSH                            | \$3.95  |
| 1358806            | 9115        | 7/8" FITTING BRUSH                            | \$3.95  |



| WIRE NUTS / WIRE TIES |        |                               |         |
|-----------------------|--------|-------------------------------|---------|
| 352102                | 8651   | BLUE WIRE NUT - 100 PER BOX   | \$7.95  |
| 352103                | 8652   | ORANGE WIRE NUT - 100 PER BOX | \$8.95  |
| 352104                | 8653   | YELLOW WIRE NUT - 100 PER BOX | \$10.95 |
| 352106                | 8654   | RED WIRE NUT - 100 PER BOX    | \$14.95 |
| 3554066               | 455066 | 5" WIRE TIES - BLACK          | \$4.45  |
| 181510                | 86107  | 8" WIRE TIES - BLACK          | \$5.45  |
| 181512                | 86109  | 11" WIRE TIES - BLACK         | \$6.95  |
| 1811782               | 86106  | 8" WIRE TIES - WHITE          | \$6.95  |
| 1811812               | 86108  | 11" WIRE TIES - WHITE         | \$6.95  |

## FUSES

|         |             |  |         |
|---------|-------------|--|---------|
| 320230A | 82038       | CARTRIDGE FUSE TYPE FRN-30                 | \$8.95  |
| 320260A | 82043       | CARTRIDGE FUSE TYPE FRN-60                 | \$13.95 |
| 320615A | 82330       | PLUG FUSE TYPE "S" 15 AMP                  | \$2.95  |
| 320SA15 | 82382       | FUSE ADAPTER FOR 15 AMP "S" TYPE FUSE      | \$5.95  |
| 320715  | 82346       | PLUG FUSE TYPE "T" 15 AMP                  | \$3.85  |
| 320730  | 82349       | PLUG FUSE TYPE "T" 30 AMP                  | \$3.85  |
| 2681812 | 44-ATC3-5PK | ATC3 3 AMP BLADE TYPE FUSE - PKG OF 5      | \$5.95  |
| 2686383 | ATM-3-5PK   | ATM3 3 AMP MINI BLADE TYPE FUSE - PKG OF 5 | \$6.45  |
| 320901  | POP3        | LITTLE POPPER 3 AMP CIRCUIT TESTER         | \$21.95 |
| 320902  | POP5        | LITTLE POPPER 5 AMP CIRCUIT TESTER         | \$21.95 |



## TAPES

|         |       |   |         |
|---------|-------|---|---------|
| 169001  | 13229 | 3/4" X 60 FOOT ROLL ELECTRICAL TAPE                               | \$1.45  |
| 169003  | 13945 | 3M SUPER 33 ELECTRICAL TAPE 3/4" X 66 FT                          | \$11.25 |
| 169005  | 16148 | 1/2" X 260" ROLL TEFLON THREAD SEAL TAPE                          | \$1.45  |
| 169081  | 1006  | 2" X 30 FOOT ROLL CORK TAPE                                       | \$16.99 |
| 169512  | 1007  | 2" X 30 FOOT ROLL FOAM TAPE                                       | \$7.95  |
| 169130  | 18317 | #1581A UL181A-P COLD WEATHER SILVER TAPE<br>2-1/2" X 60 YARD ROLL | \$29.95 |
| 169115  | 18319 | #1599B UL181B-FX SILVER TAPE 2" X 120 YARD ROLL                   | \$19.95 |
| 169120  | 18320 | #1599B UL181B-FX BLACK TAPE 2" X 120 YARD ROLL                    | \$19.95 |
| 169125  | 18321 | #1599B UL181B-FX SILVER TAPE 3" X 120 YARD ROLL                   | \$29.95 |
| 169052V | 18312 | #1500 2" X 60 YARD ROLL CLOTH DUCT TAPE - BLACK                   | \$16.95 |
| 169050V | 18311 | #1500 2" X 60 YARD ROLL CLOTH DUCT TAPE - SILVER                  | \$16.95 |
| 169032V | 18335 | #3520CW 2" X 50 YARD ROLL FOIL DUCT TAPE                          | \$17.95 |
| 169033V | 18336 | #3520CW 3" X 50 YARD ROLL FOIL DUCT TAPE                          | \$25.95 |



## CAULK / SEALANTS

|        |       |   |        |
|--------|-------|---|--------|
| 458955 | 20080 | CLEAR SILICONE CAULK - 10.3 OZ. TUBE          | \$6.25 |
| 458989 | 20082 | ALUMINUM COLOR SILICONE CAULK - 10.3 OZ. TUBE | \$6.25 |
| 454255 | 18068 | RED HIGH TEMP SILICONE CAULK - 10.3 OZ. TUBE  | \$8.95 |
| 458522 | 1004  | THUMGUM 2 LB. SLUG SEALING GUM                | \$6.95 |





## REFRIGERATION FLUSH / CHEMICALS

|        |         |  |          |
|--------|---------|--|----------|
| 454820 | CSSF-10 | CLEAN SHOT FLUSH 10LB                                | Call     |
| 454805 | 4300-11 | RX-11 REFRIGERATION SYSTEM FLUSH SOLVENT- 32 OZ. CAN | \$139.95 |
| 454815 | 4300-89 | RX-11 CAN TAP INJECTION FITTING                      | \$37.95  |
| 454810 | 4300-50 | RX-11 ¼ FLARE TO RUBBER CONE TOOL                    | \$14.95  |
| 454965 | 4300-08 | RX-11 KIT INCLUDES 1 LB. CAN, CAN TAP, AND BLOWGUN   | \$172.95 |
| 454985 | 985S-MC | 985S-MC LEAK ARMOR FLEX INJECT                       | \$60.95  |
| 454995 | 995S-MC | 995S-MC LEAK ARMOR W/ DYE FLEX INJECT                | \$73.95  |
| 454962 | 4050-08 | NU-CALGON EASY SEAL DIRECT INJECT                    | \$73.95  |
| 454991 | 991-MC  | SUPERCHANGE RETROFIT ENHANCER FLEX INJECT            | \$81.95  |

## CLEANERS / LUBRICANTS / CEMENTS INSECT SPRAY / BUBBLES

|        |          |  |         |
|--------|----------|--|---------|
| 454011 | 85-EC01  | PROTECH EVAPORATOR CLEANER SELF RINSING (GREEN) - GALLON | \$15.95 |
| 454013 | 85-501   | PROTECH CONDENSER CLEANER FOAMING ACID - (RED) - GALLON  | \$16.95 |
| 142021 | 0141     | PREMIUM TRIGGER SPRAY BOTTLE 1 QUART CAPACITY            | \$4.95  |
| 454850 | 85-C02   | EVAPORATOR FOAM NO RINSE 18 OZ. AEROSOL                  | \$6.95  |
| 454854 | 4291-18  | NU-CALGON NU-BRITE CLEANER/DEGREASER 18 OZ. AEROSOL      | \$12.95 |
| 454855 | 4290-75  | NU-CALGON NU-BLAST CONDENSER CLEANER 18 OZ. AEROSOL      | \$21.95 |
| 454035 | 85-2600  | VACUUM PUMP OIL - 1 QUART BOTTLE                         | \$8.95  |
| 454036 | 85-2601  | VACUUM PUMP OIL - 1 GALLON JUG                           | \$26.95 |
| 454003 | 40019    | ZOOM - SPOUT OILER 4 OZ.                                 | \$4.45  |
| 454020 | WD490026 | WD-40 AEROSOL - 8 OZ CAN                                 | \$10.95 |
| 456200 | 85-200   | SWAT WASP & HORNET KILLER 14 OZ AEROSOL                  | \$8.45  |
| 458013 | PD523002 | PVC CLEANER - 16 OZ. CAN                                 | \$11.95 |
| 458069 | 670010   | ALL - WEATHER PVC CEMENT - 16 OZ. CAN                    | \$16.95 |
| 460168 | 93807    | FLOURESCENT LEAK DETECTOR 8 OZ DAUBER                    | \$9.95  |
| 454167 | 16166    | LA-CO SURE CHECK LEAK DETECTOR 1 PINT SPRAY              | \$26.95 |
| 460240 | 4182-24  | CAL-BLUE LEAK DETECTOR - 1 QUART SPRAY                   | \$14.95 |

# DON'T FORGET, WE DELIVER

Call your local branch or shop online at  
**[AirManagementSupply.com](http://AirManagementSupply.com)**



## Air Management Supply Branches



### MINNEAPOLIS

7120 Northland Terrace N.  
Minneapolis, MN 55428  
(763) 535-1108 | Fax (763) 535-1128  
Manager: Bill Schmidt



### SIOUX FALLS

700 N Ebenezer Ave  
Sioux Falls, SD 57107  
(605) 335-1416 | Fax (605) 335-1438  
Manager: Bruce Hendricks



### WATERLOO

622 Ansbrough Ave  
Waterloo, IA 50701  
(319) 234-6894 | Fax (319) 234-0013  
Manager: Lyle Trent



### DES MOINES

1820 E. Sheridan Ave.  
Des Moines, IA 50316  
(515) 564-0311 | (515) 564-0315  
Manager: Kirk Haage



### OMAHA

12302 Cary Circle  
La Vista, NE 68128  
(402) 339-5202 | Fax (402) 339-2572  
Manager: Don Hawthorne



### ST. LOUIS

2300 Clark Ave  
St. Louis, MO 63103  
(314) 567-5131 | Fax (314) 567-7427

## DOWNLOAD OUR MOBILE APP

and put the **tools you need**  
in the palm of your hands!

